



HP Z Turbo Drive Dual Pro

Product No.



4YF59AA

UPC CODE



JAN CODE



PRDN Order 000055591649



Qty 1



ASM AMO2202QX2

05/19/2022



CN

ADAPTER PRODUCT OF CHINA
OTHER PRODUCTS AS MARKED



CFB



Installation

Kit contents



Kit contents might vary depending on your computer model.

- M.2 module
- Heat sink and thermal interface material
- Adapter
- Installation instructions (this document)
- Warranty information

Preparing for installation

- 1 If you need help preparing the computer for this installation, consult the removal and replacement procedures in the HP Customer Self Repair Services Media Library at <http://www.hp.com/go/sml>.
- 2 Power down the workstation, and then disconnect the power cord.
- 3 Power down all external devices, and then disconnect them from the computer.
- 4 Remove the access panel.

Printed in U.S.A.



L39818-001

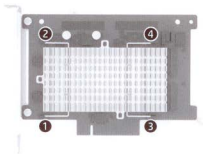
© Copyright 2018 HP Development Company, L.P.

The information contained herein is subject to change without notice. The only warranties for HP products and services are set forth in the express warranty statements accompanying such products and services. Nothing herein should be construed as constituting an additional warranty. HP shall not be liable for technical or editorial errors or omissions contained herein.

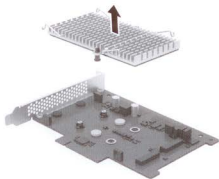
First Edition August 2018

Installation

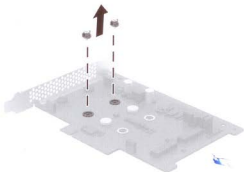
- 5 Press the heat sink levers down and then in to release the hooks in the following order.



- 6 Remove the heat sink from the adapter.



- 7 Remove the standoffs from the M.2 slots on the adapter.



 The protective covering over the thermal pads is perforated. If you are installing a single module, remove the half closest to the levers on top of the adapter. If you are installing both modules or a second module, be sure that the entire covering is removed.

8 Ensure that the standoffs and rubber bumpers are properly arranged.

- If you are installing a one-sided 2280 M.2 module, do not change the default arrangement.



- If you are installing a one-sided 22110 M.2 module, move the outer rubber bumper to the standoff position. You will reinstall the standoff in the outer position.



- If you are installing a two-sided 2280 M.2 module, remove the inner rubber bumper.



- If you are installing a two-sided 22110 M.2 module, remove both rubber bumpers. You will reinstall the standoff in the outer position.

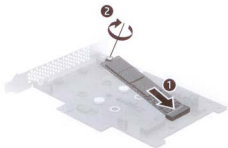


9 Insert the standoff into the curve of the edge of the drive.



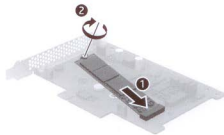
- 10 Insert the M.2 module, label facing up, into the M.2 slot on the adapter at an angle ❶ and then secure the standoff to the adapter ❷.

Install the first M.2 module into the M.2 slot closest to the top of the adapter.



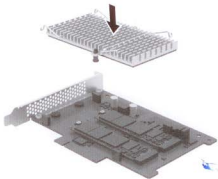
- 11 Insert the optional second M.2 module, label facing up, into the M.2 slot on the adapter at an angle ❶ and then secure the standoff to the adapter ❷.

Install the second M.2 module into the M.2 slot farthest from the top of the adapter.

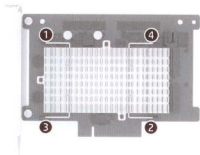


- 12 Place the heat sink on the adapter.

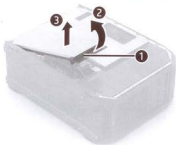
If there is a protective covering over the thermal pads, remove it.



- 13 Hold the middle of the heat sink down, and then press the hooks down in the following order.



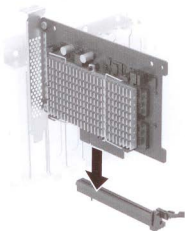
- 14 (HP Z8 only) Lift the PCIe retainer by the access point 1, rotate it up 2, and then remove it from the computer 3.



- 15 Remove the PCIe slot cover.



- 16 Slide the adapter into the PCIe slot until it is fully seated.



- 17 Insert the PCIe retainer into the computer **1**, and then lower it into place.



After the installation

- 18 Restore the access panel.
- 19 Reconnect external devices and power cord, and restore power to all external devices.