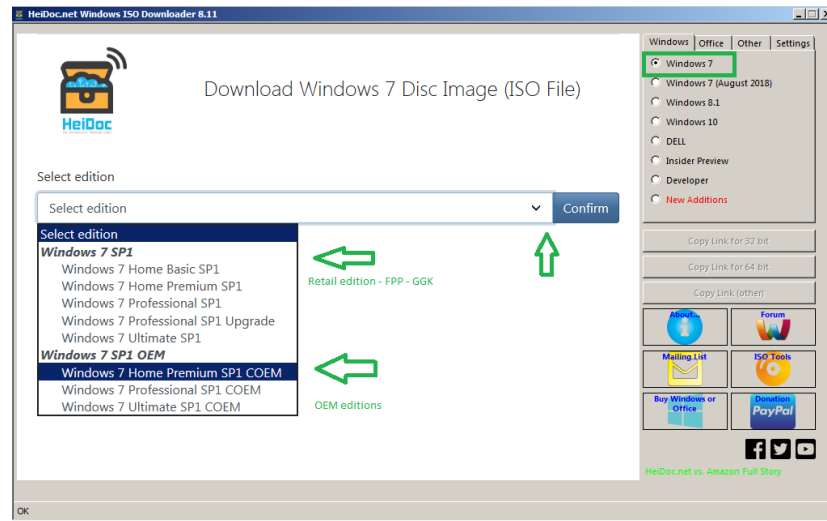
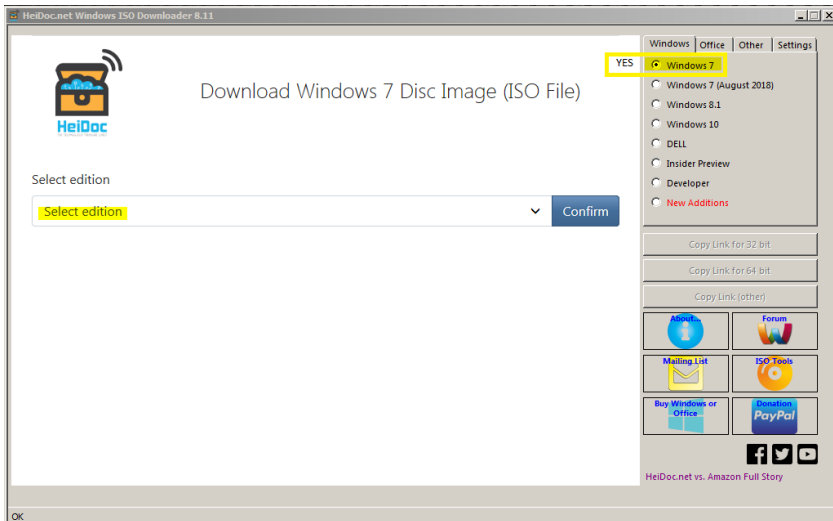


Heidoc – Windows 7 ISO file(s) downloads

Heidoc - Windows ISO downloader tool - URL
<https://www.heidoc.net/joomla/technology-science/microsoft/67-microsoft-windows-and-office-iso-download-tool>



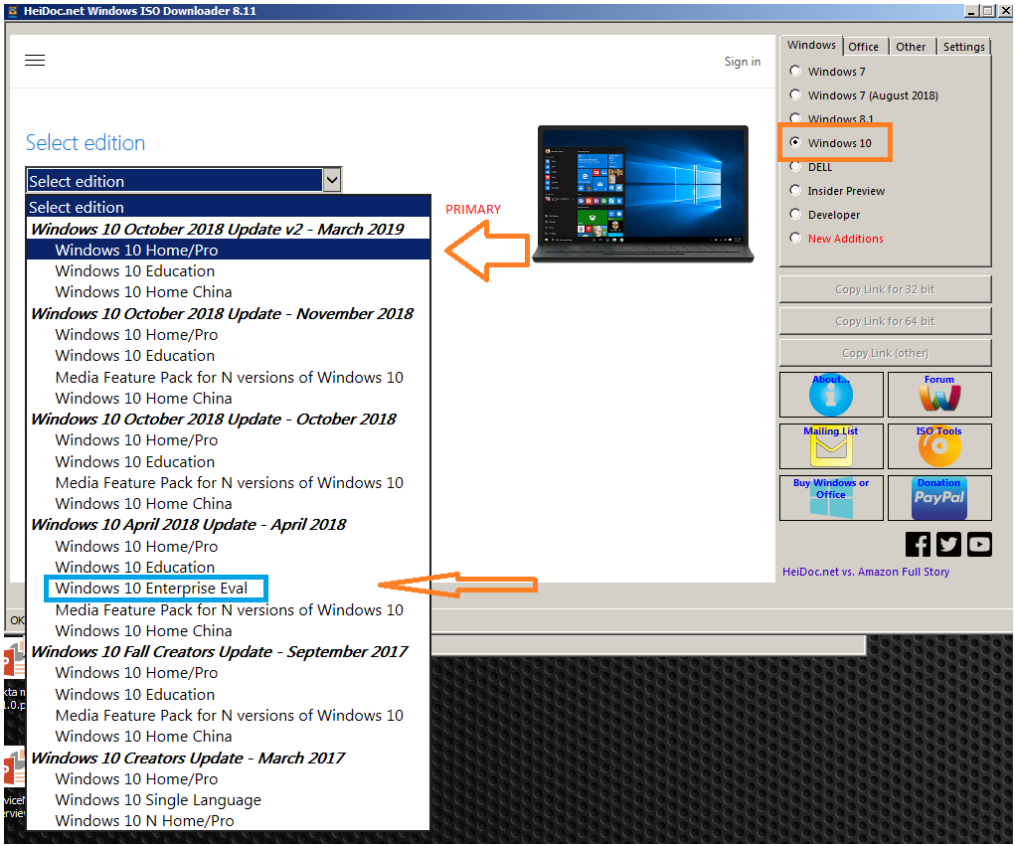
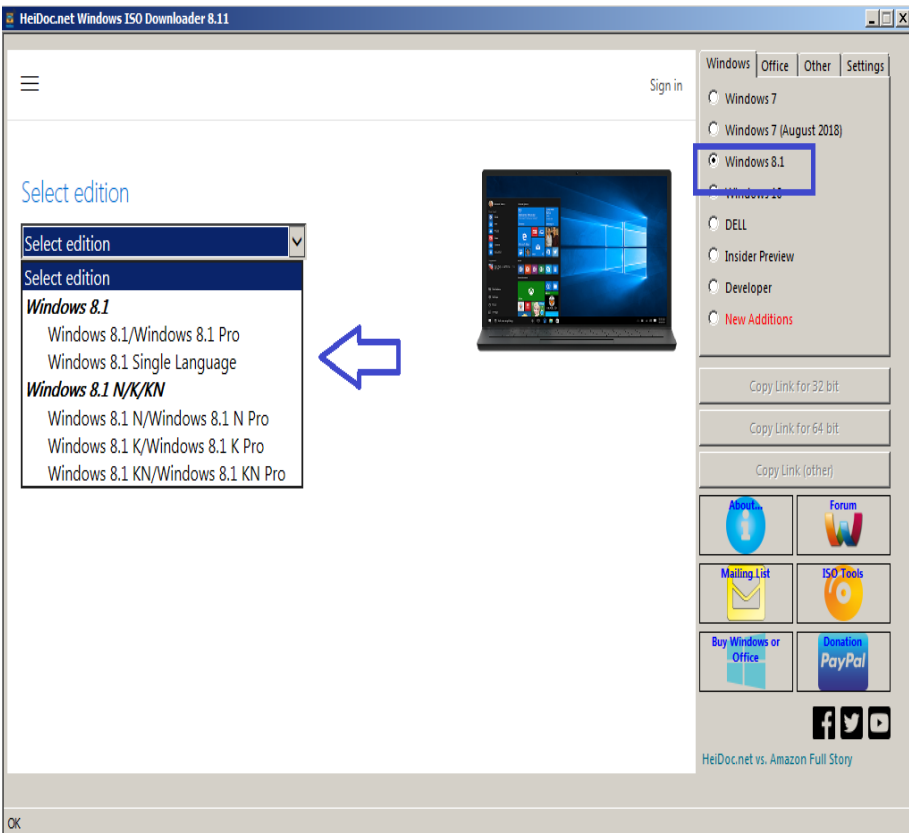
Select your Windows edition (OEM or Retail), Select your language and type (32 or 64 bit based on processor). Most use 64-bit. Eventually, confirm to start the download using a browser



Heidoc – Windows 8.1 and Windows 10 ISO file(s) downloads

Heidoc - Windows ISO downloader tool - URL
<https://www.heidoc.net/joomla/technology-science/microsoft/67-microsoft-windows-and-office-iso-download-tool>

Select your Windows edition (Home/Pro or another), Select your language and Windows type (32 or 64 bit based on processor). Most use 64-bit. Eventually, confirm to start the download using a browser addin



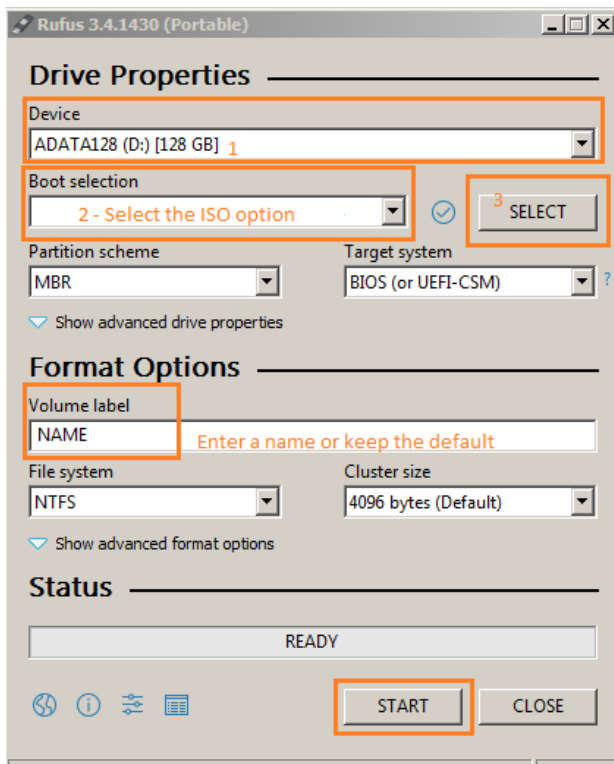
The ISO image files are big in size. Once the download completes, keep the ISO file and download another utility called **Rufus** from <https://rufus.ie/>

We will use Rufus to write the ISO image file on the USB pendrive so that we make the pendrive a bootable device.

You will need a blank (empty) USB pendrive with at least 4 GB capacity

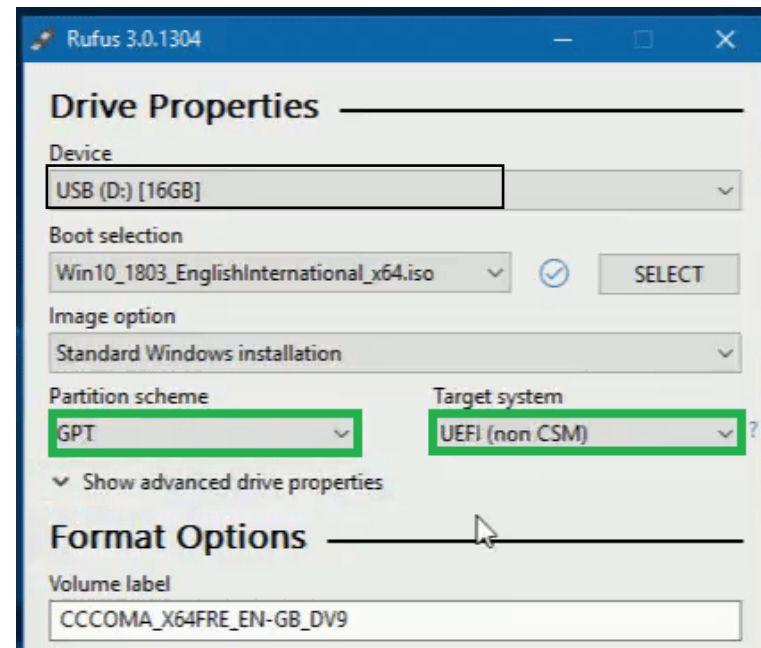
- Start Rufus
- Select the ISO image you downloaded, the USB pendrive you will write to.
Eventually, choose the Partition scheme and Target system type [between UEFI or BIOS depending on the PC mode/configuration]
Information about BIOS and UEFI >[here](#)< and >[here](#)<
- When ready with the configuration, click on **START** and follow the on-screen instructions

PC with BIOS or legacy CSM mode enabled



/ or /

PC with UEFI enabled



When ready with the ISO file and Rufus, you need to boot from the bootable image

- Make sure the USB drive is inserted (plugged in)
- Restart the computer
- Use the **Esc** and/or **F9** buttons to boot from the bootable USB device
- Highlight the USB drive and hit [ENTER]
- Follow the on-screen instructions to boot and install Windows

