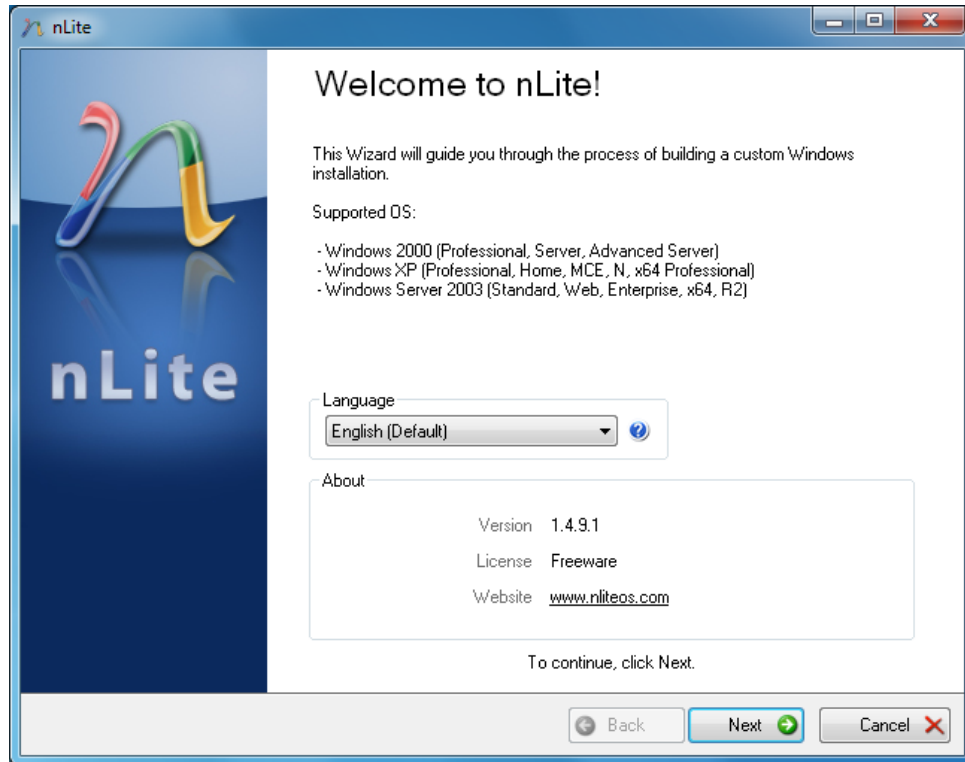
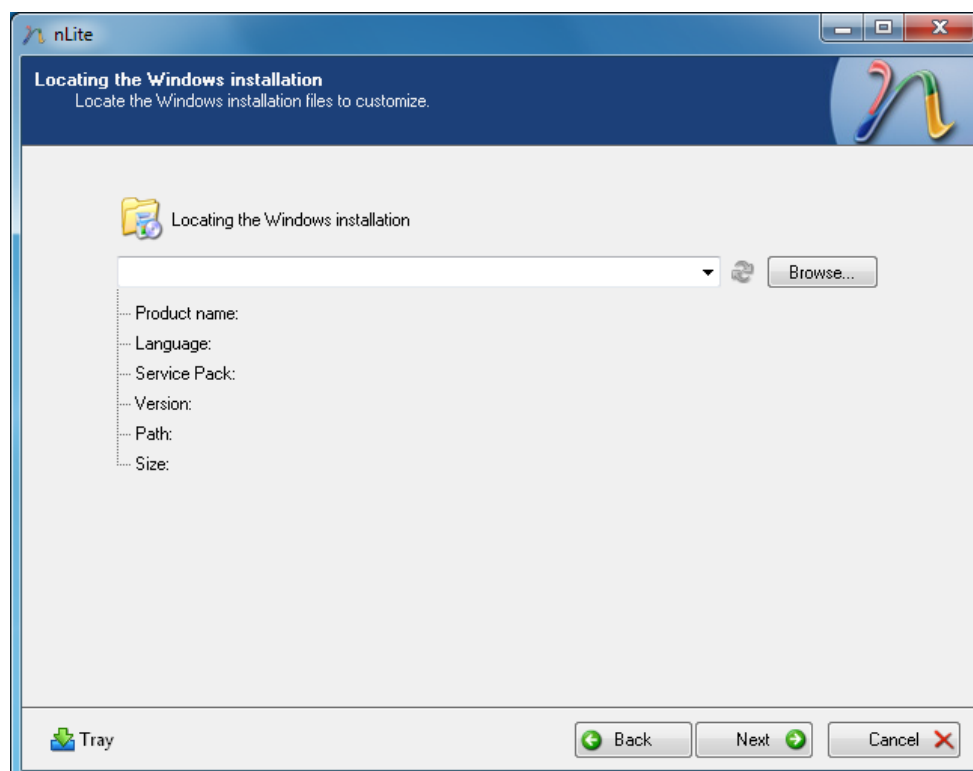


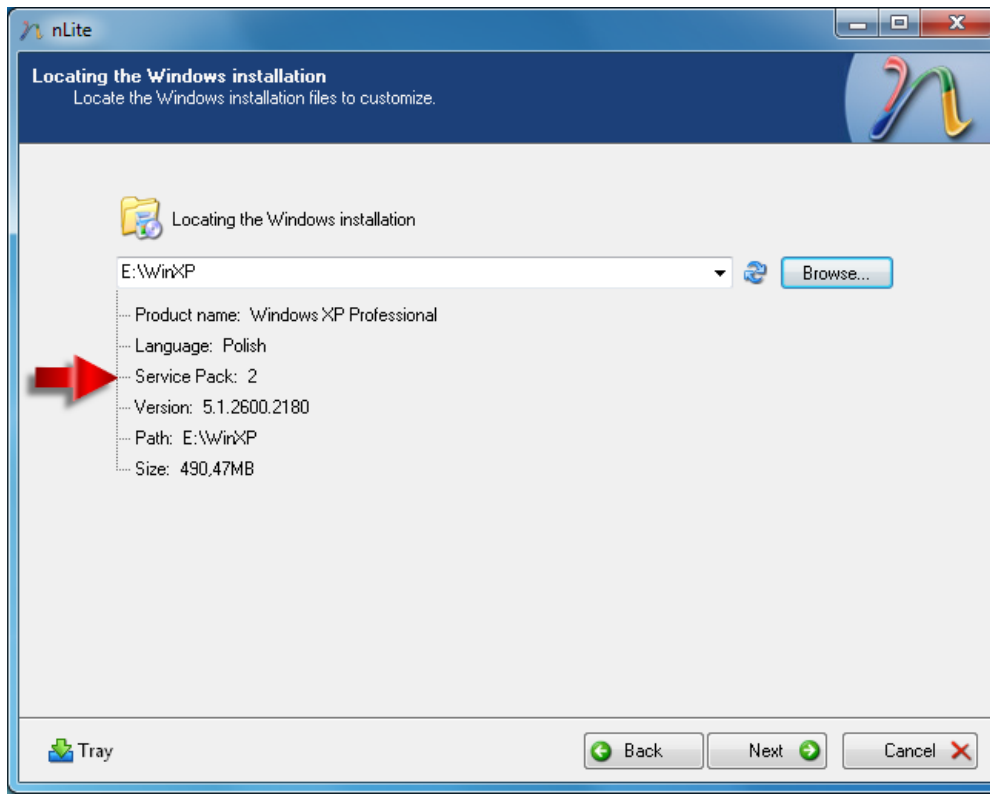
1. Extract Intel SATA drivers ([10.1.0.1008 f6flpy-x86.zip](#)) using [7-Zip\(free\)](#) or [WinRAR](#).
2. Copy the contents of your Windows XP installation disc to a new folder on HDD.
3. Run [nLite](#), select your language and choose ‘ **Next** ’.



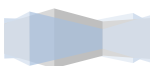
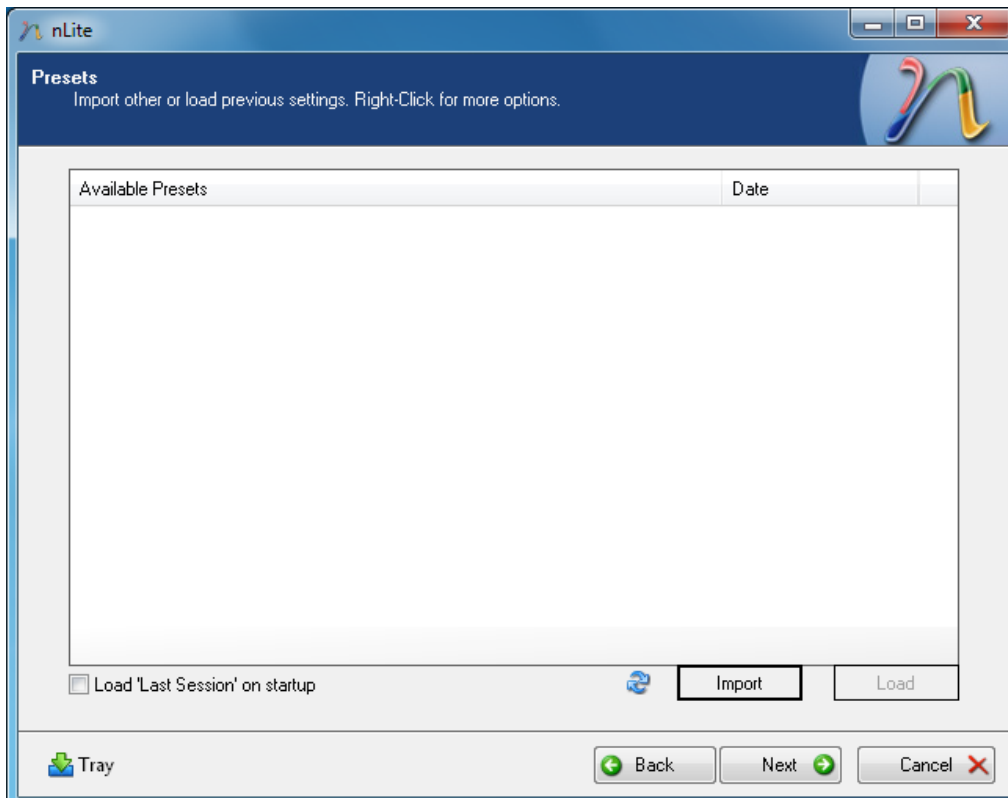
4. Click ‘ **Browse...** ’ and point folder where are the copied XP files. *In this example: E:\WinXP.*



Determine does any Service Pack (SP) has been integrated with the XP installation disc and if so, which version. **It should be at least SP2** like in the below example. If it's lower version, then in the **point 6** you will find information on how to meet the minimum requirement.

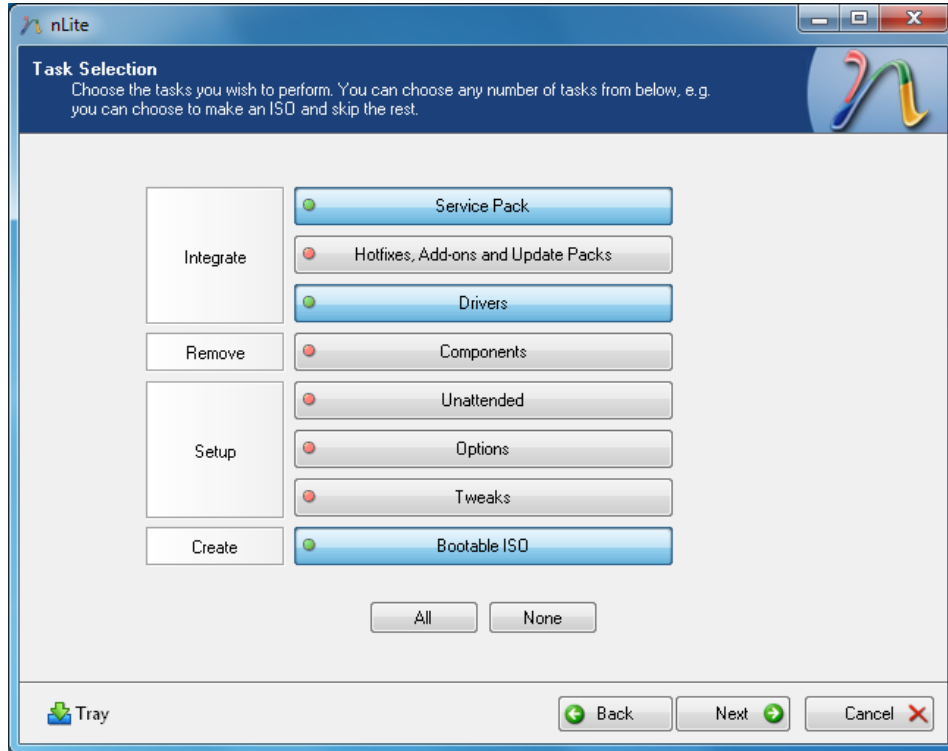


5. Choose 'Next'.

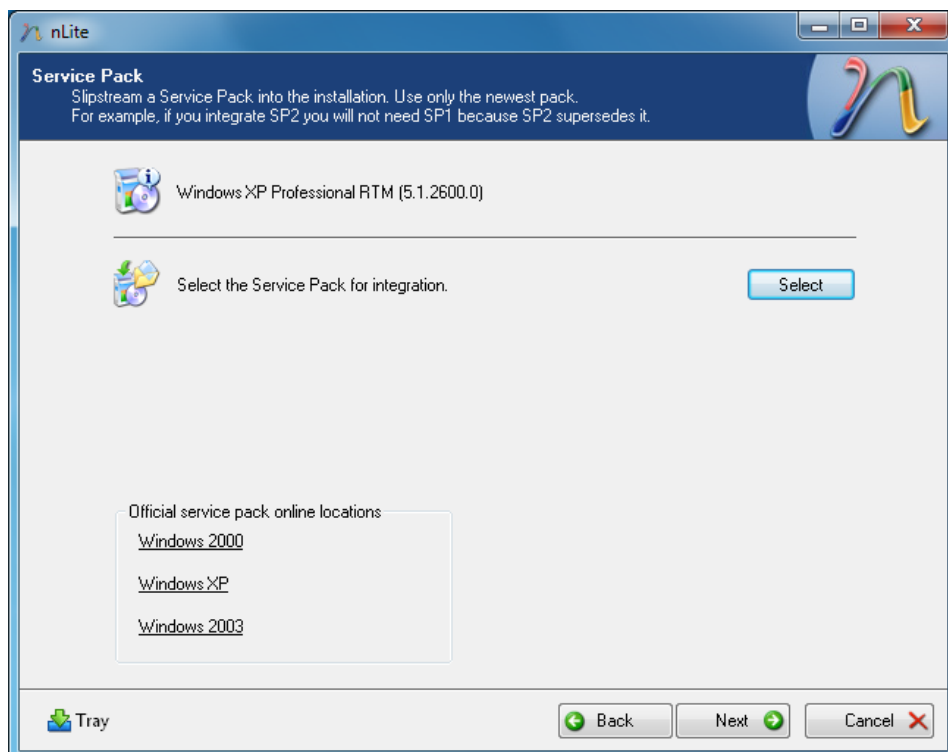


**6.** When the XP installation disc was not integrated with **SP** or only with **SP1** then (otherwise skip to the **point 7**):

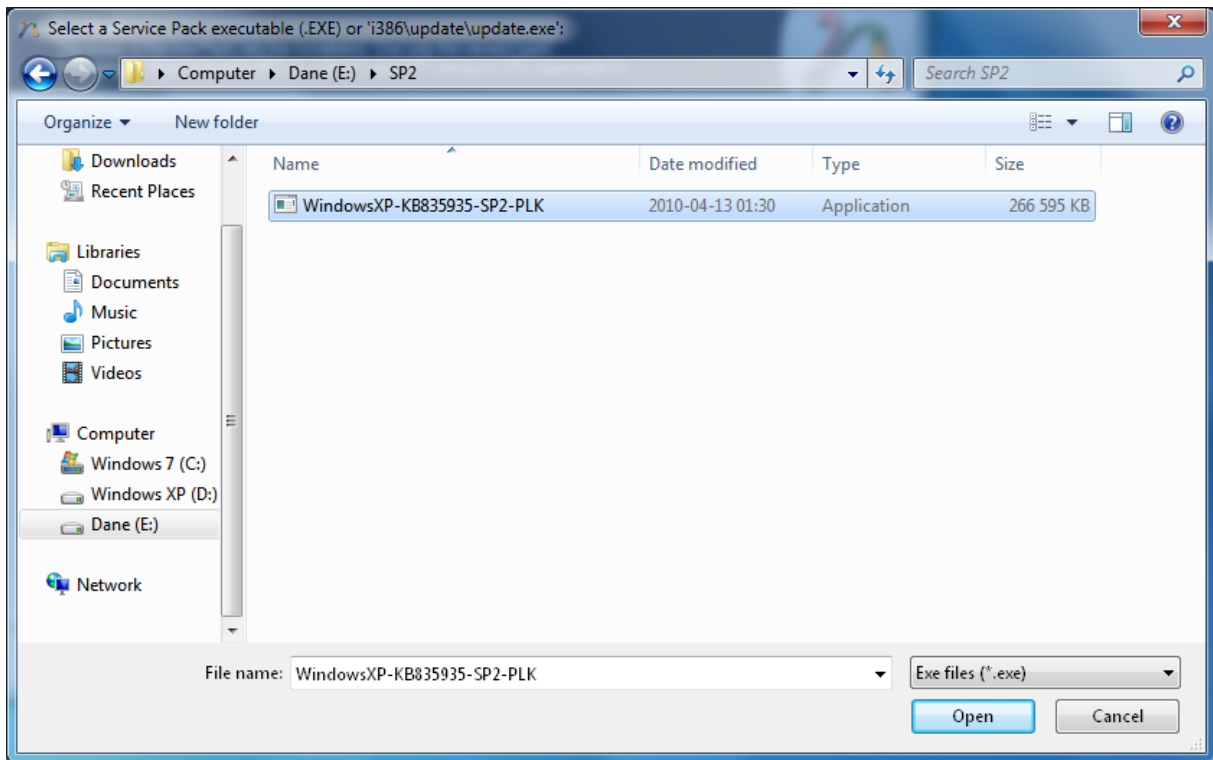
Download **SP2** from the Microsoft website (set your XP disc language there). In ‘ **Task Selection** ‘ choose ‘ **Service Pack** ‘ , ‘ **Drivers** ‘ and ‘ **Bootable ISO** ’. Click ‘ **Next** ‘.



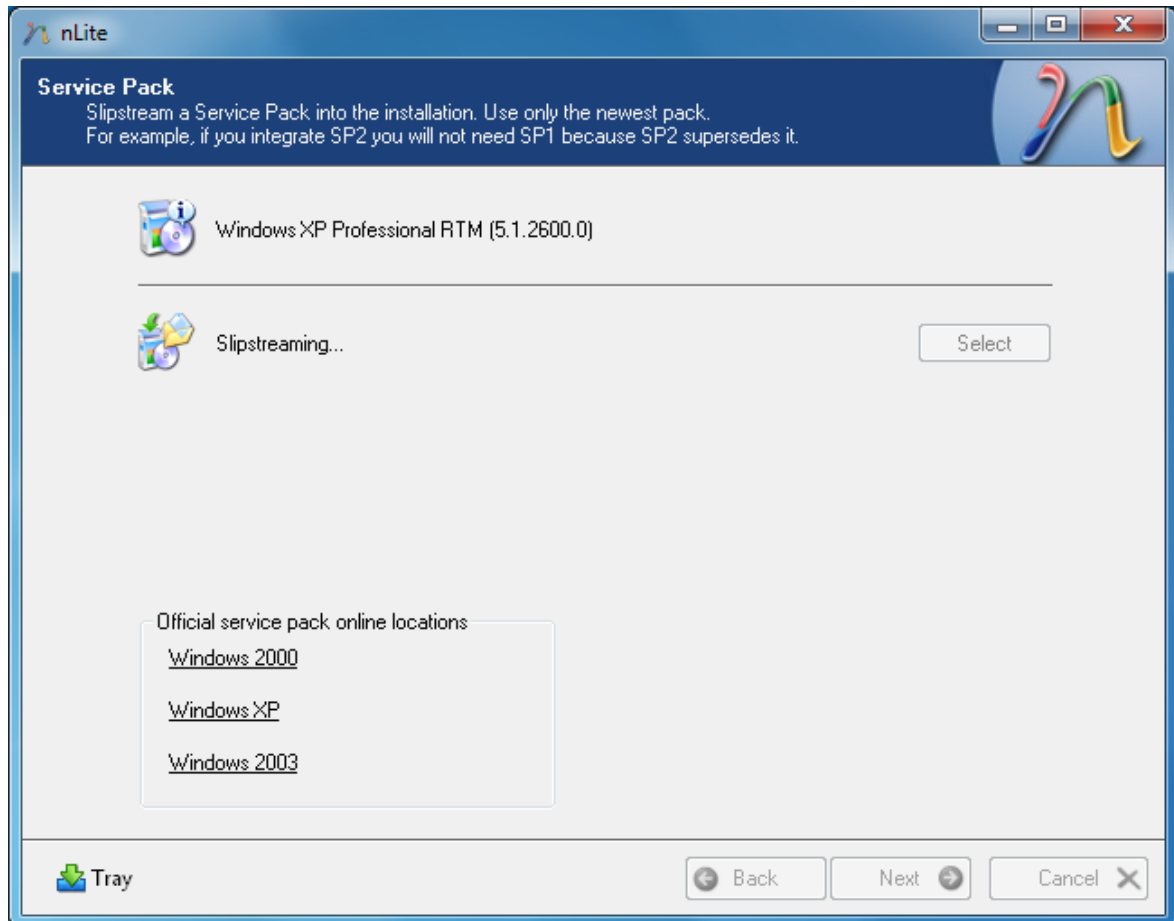
Choose ‘ **Select** ‘



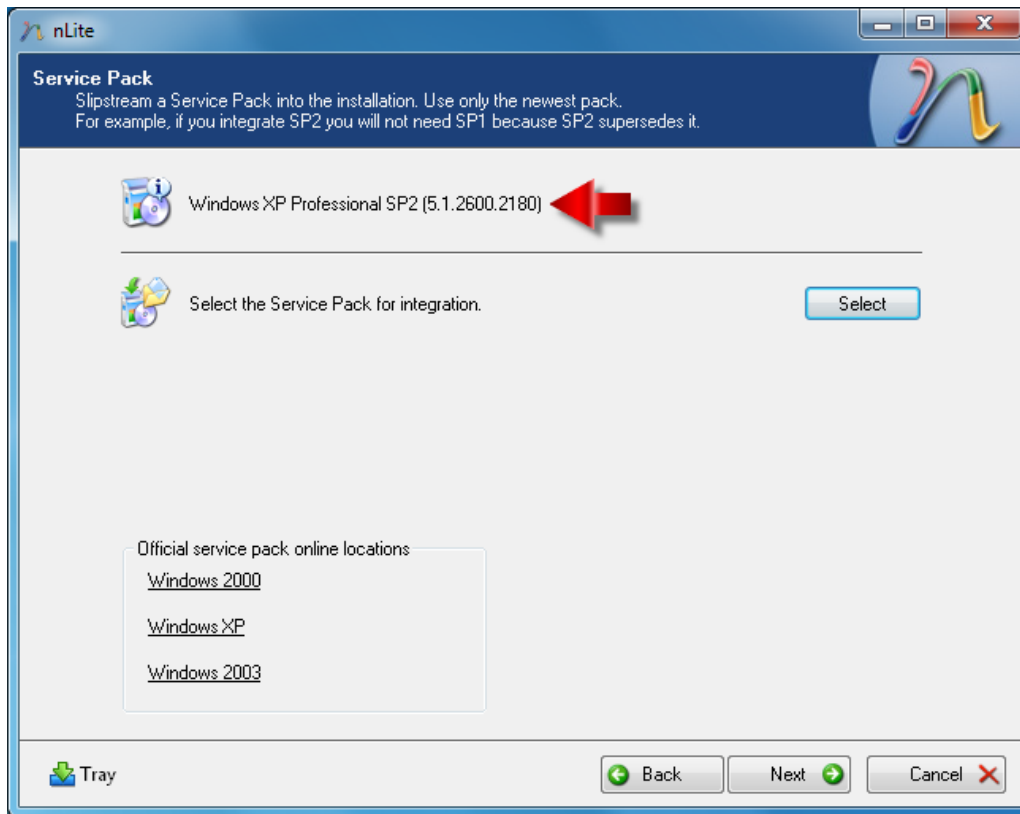
and double left-click the **SP2** file.



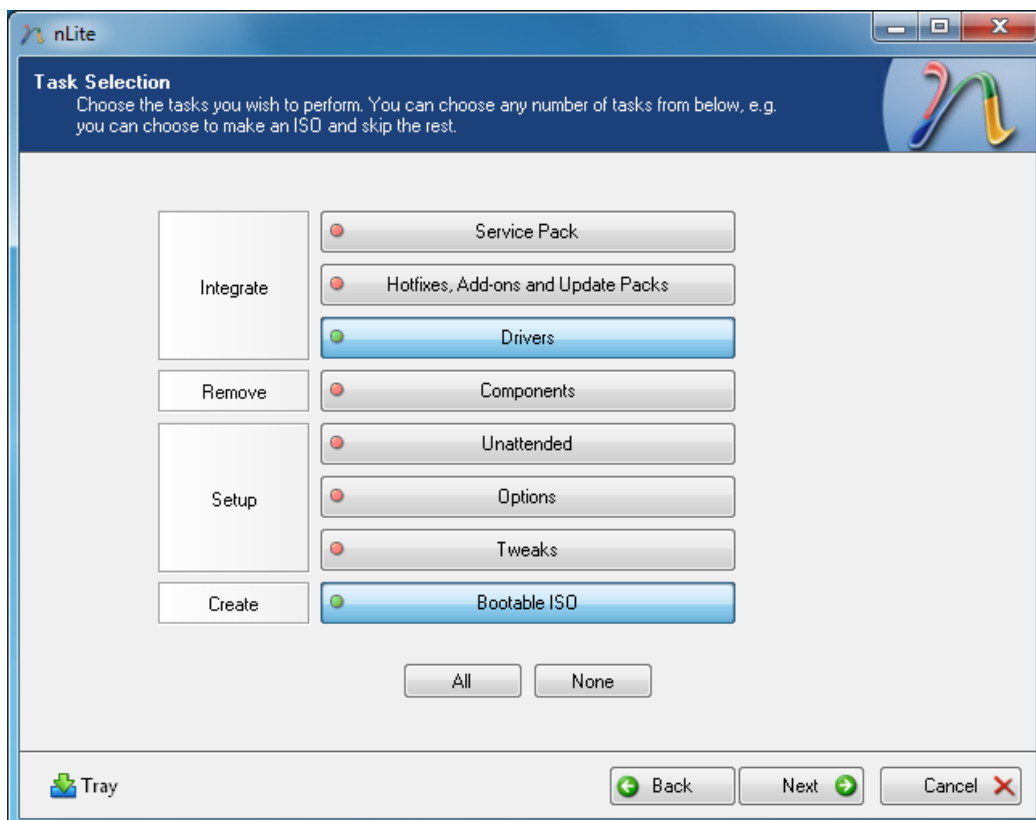
nLite will automatically extract and integrate it with your windows files folder.



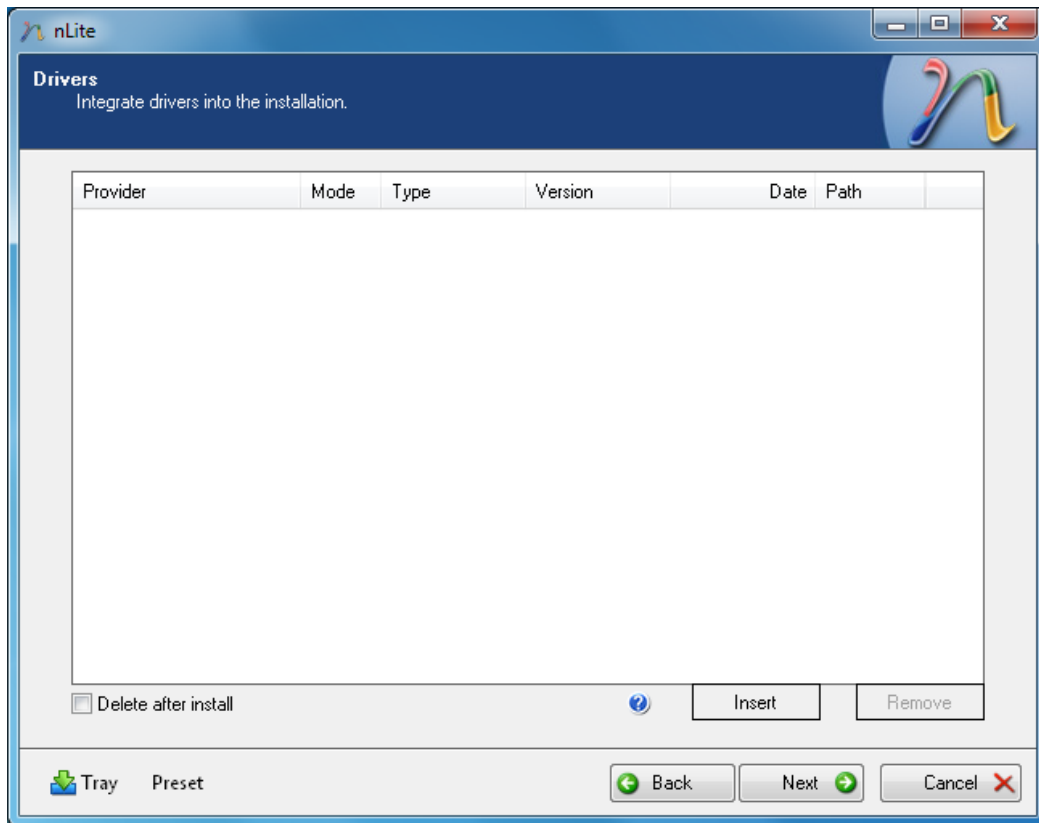
SP2 is slipstreamed now. Choose ‘ **Next** ’ and skip to the **point 8**.



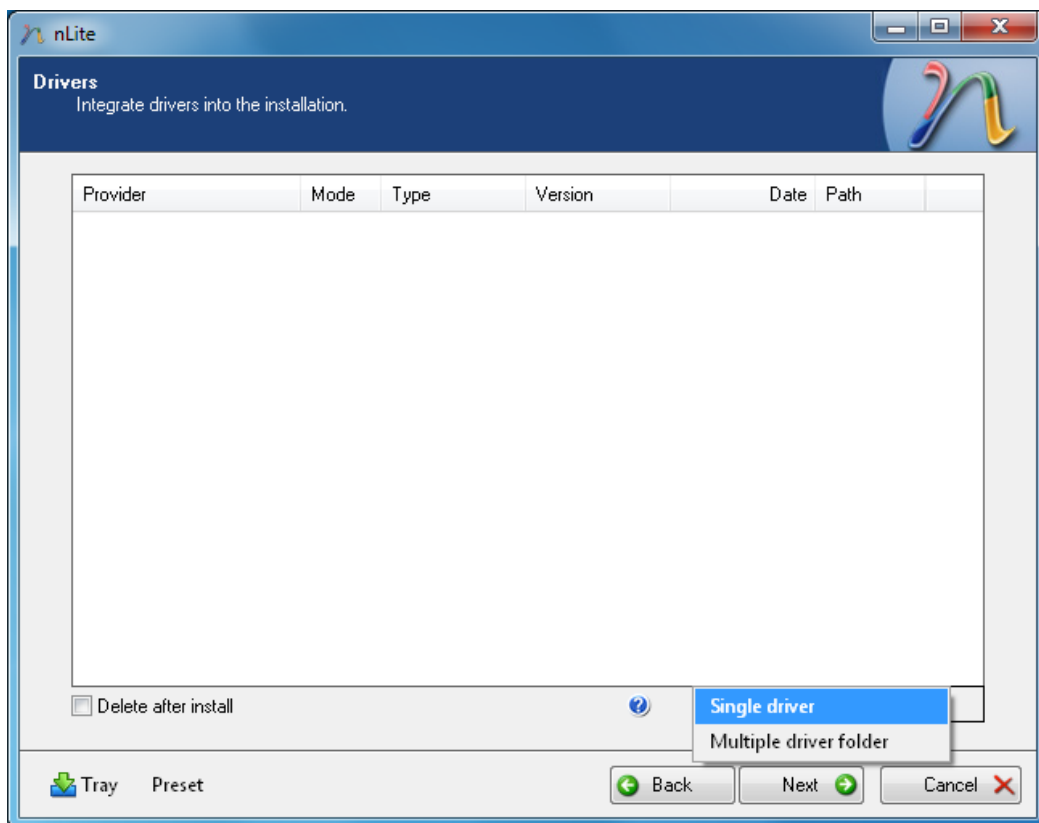
7. When your XP installation disc is already integrated with SP2 or SP3, then in ‘ **Task Selection** ’ choose ‘ **Drivers** ’, ‘ **Bootable ISO** ’ and click ‘ **Next** ’.



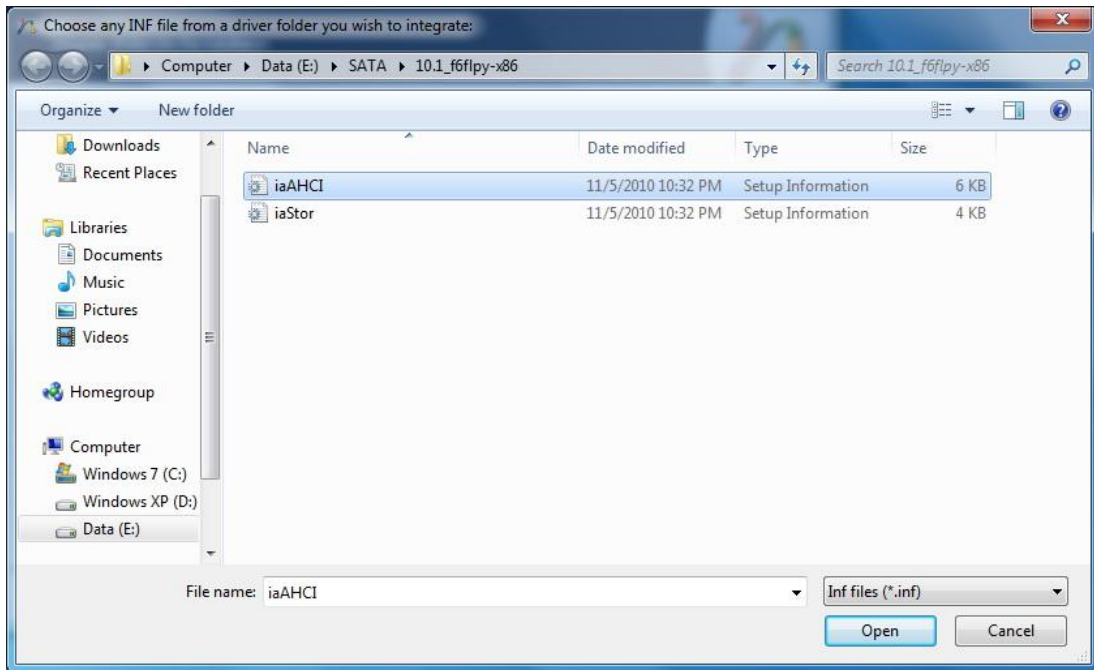
8. Select 'Insert'



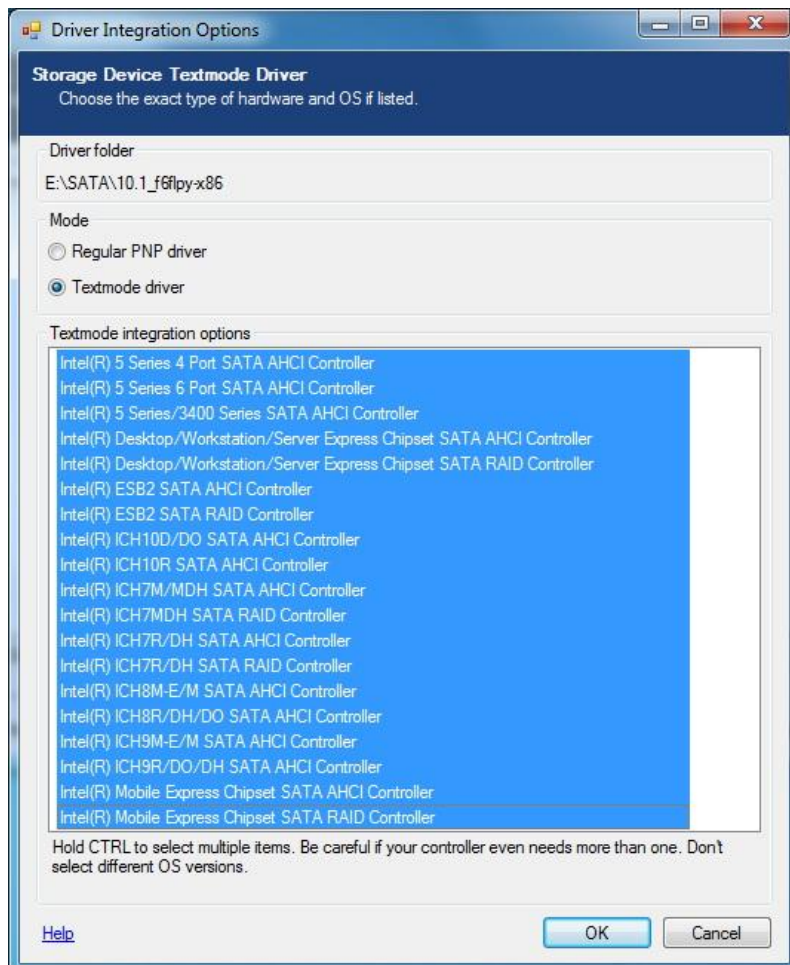
and click 'Single driver'.



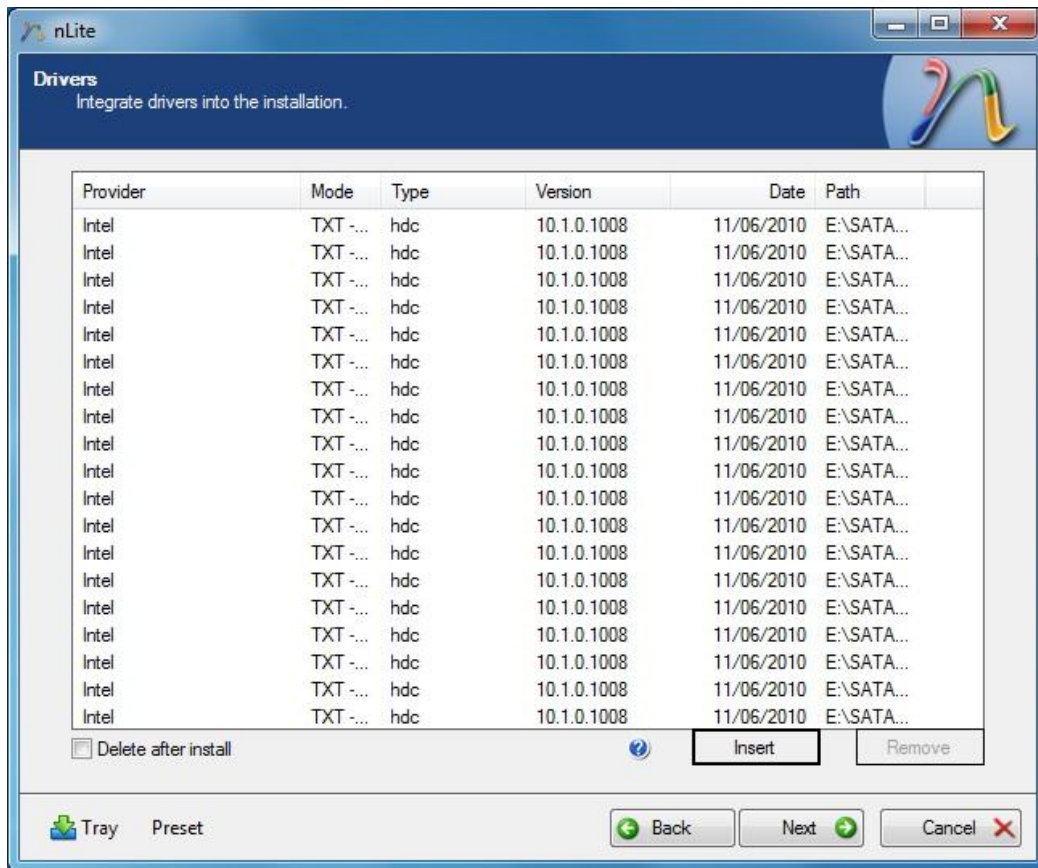
9. Go to the folder with extracted Intel SATA drivers from the **point 1** and double left-click the **iaAHCI** file.



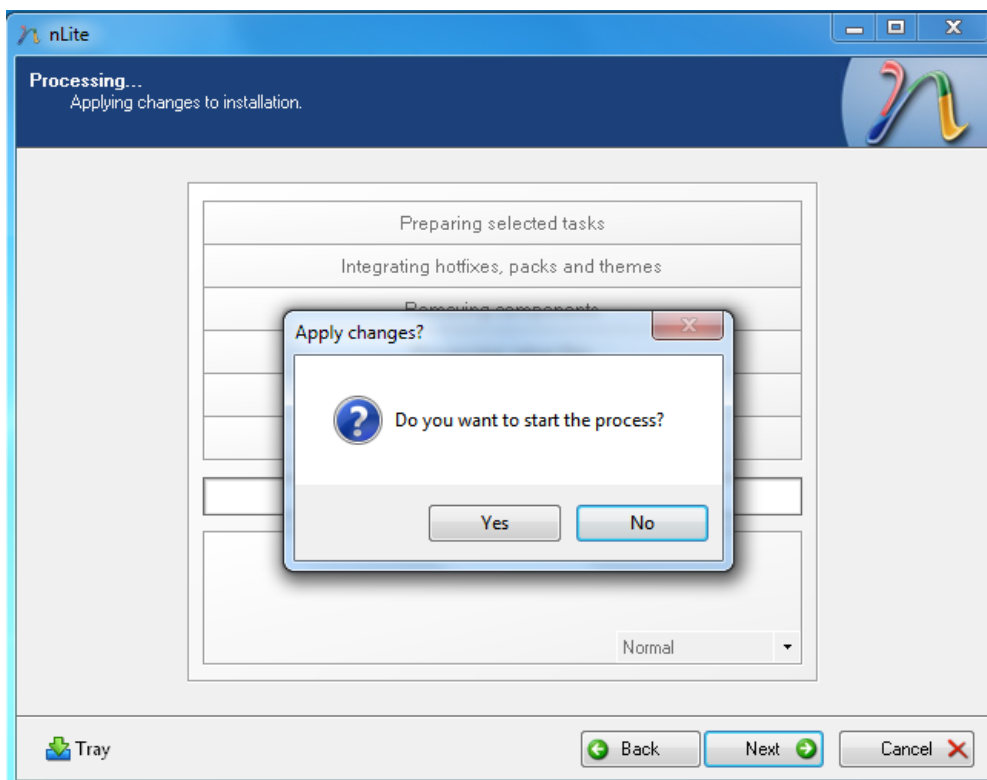
10. Choose 'Textmode driver' and select all drivers by holding "CTRL + A" keys.



11. Click 'Next'.

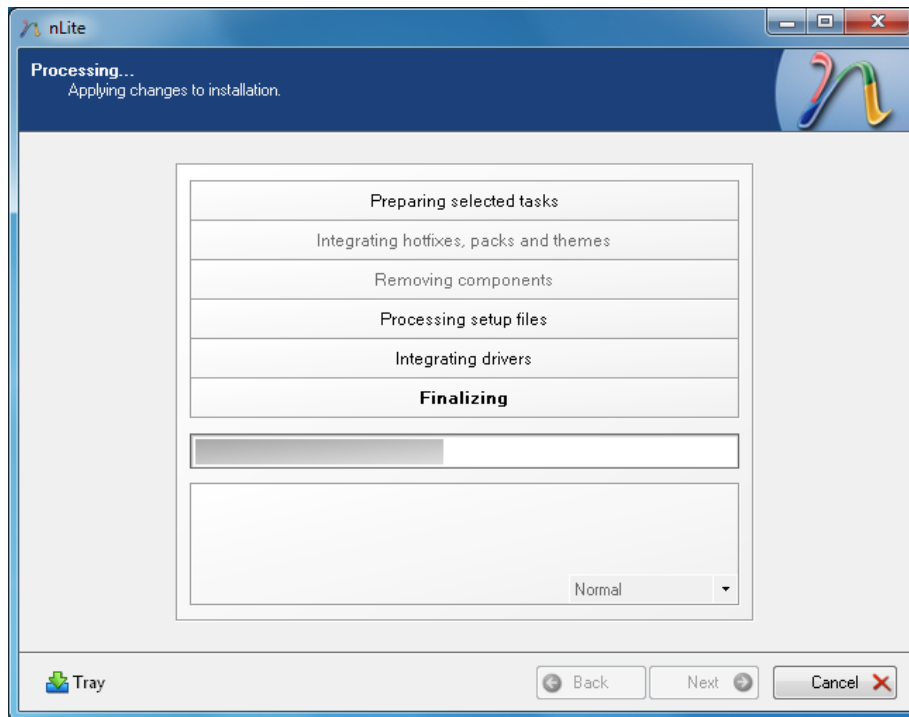


12. Choose 'Yes'. This will begin the process of slipstreaming the SATA driver into files which were copied from the XP installation disc.

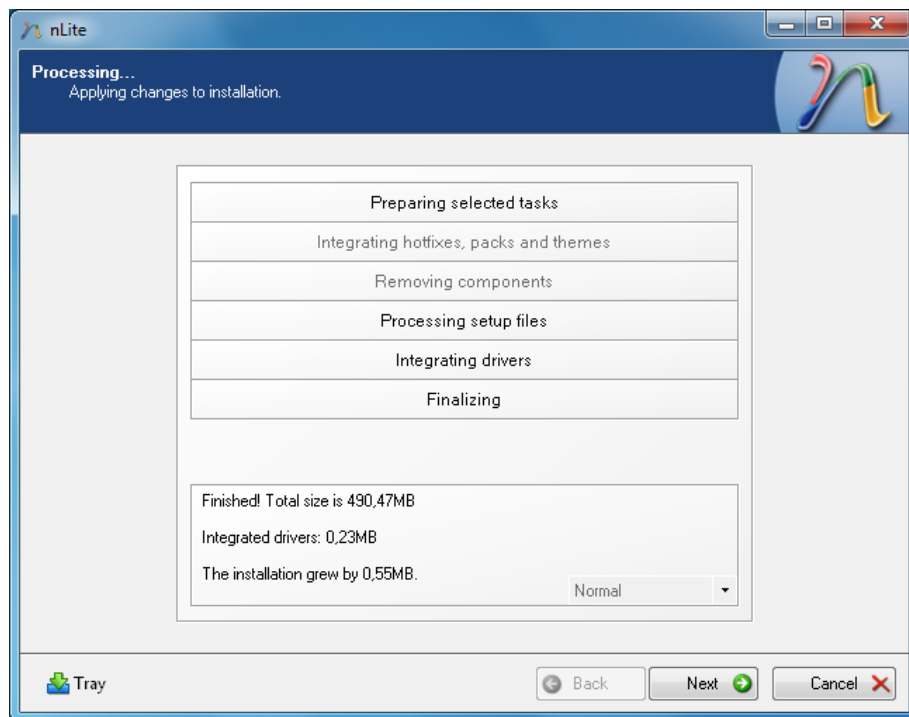




**13.** You will see now progressive stripes.



**14.** When nLite will finish this task you will be informed about it like on the below photo.



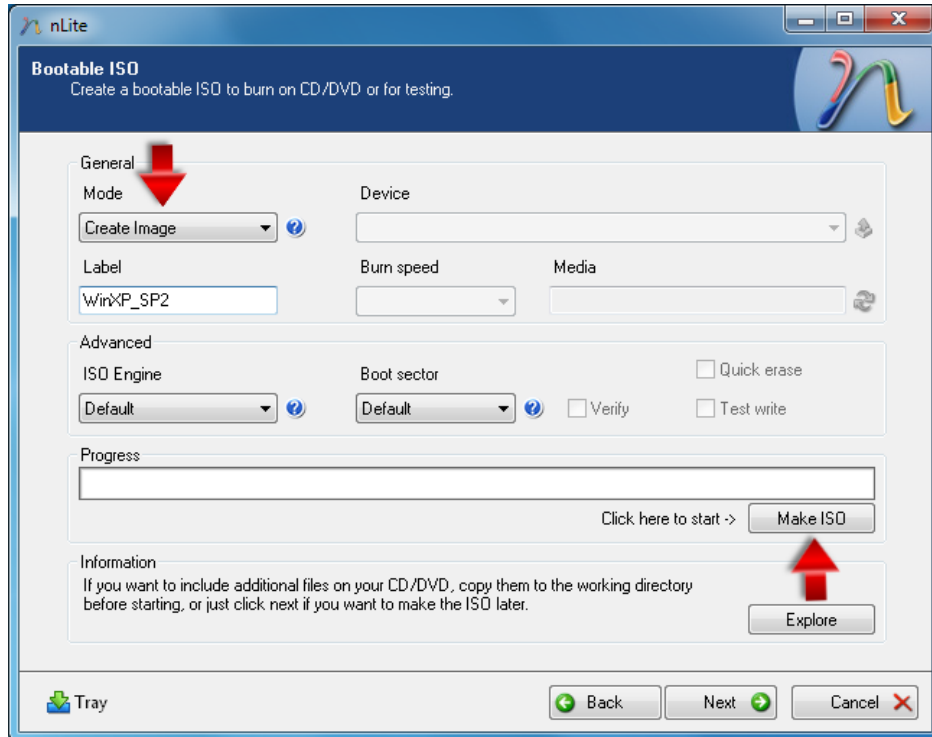
**15.** In this final step You may:

- create ISO image to burn it later
- burn new XP copy directly on CD-R disc.

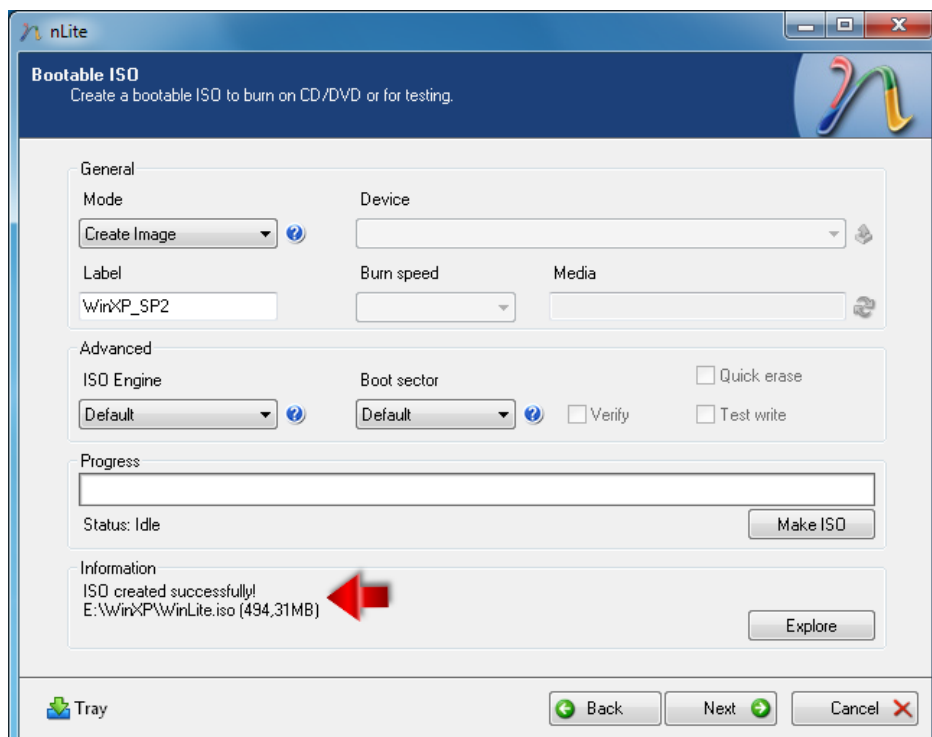


## Option 1. Creating ISO image:

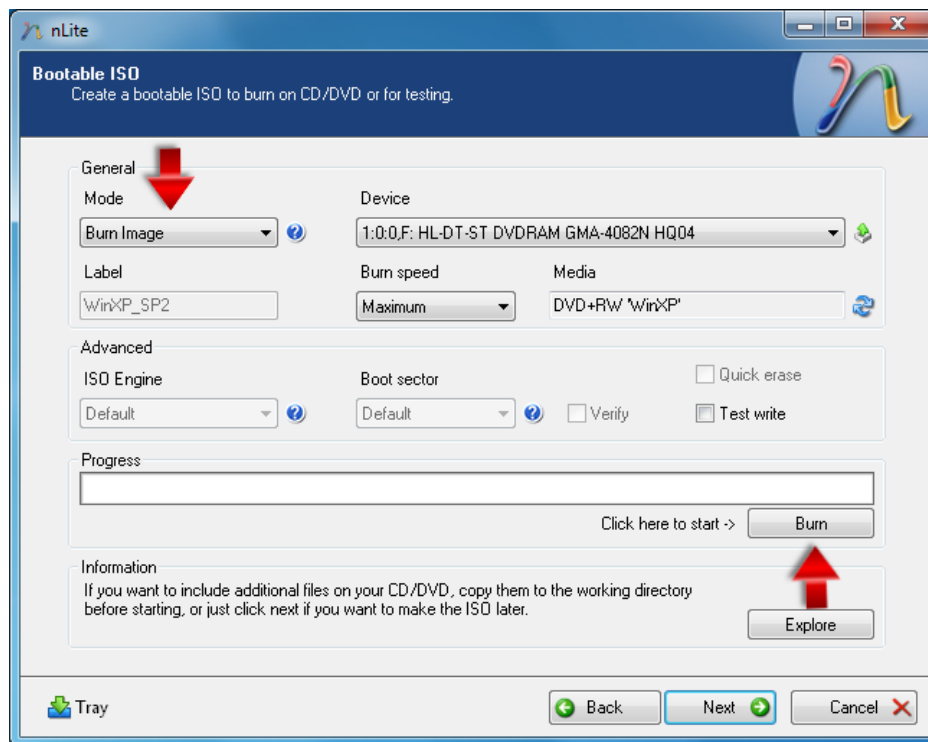
Before you will do anything you may want to change standard 'Label' name. Under 'Mode' choose 'Create Image', and click the 'Make ISO' button. After this action you will need to choose where you want to save the ISO file and how it should be named.



At the bottom of the nLite window will show up information that the process has ended with success.

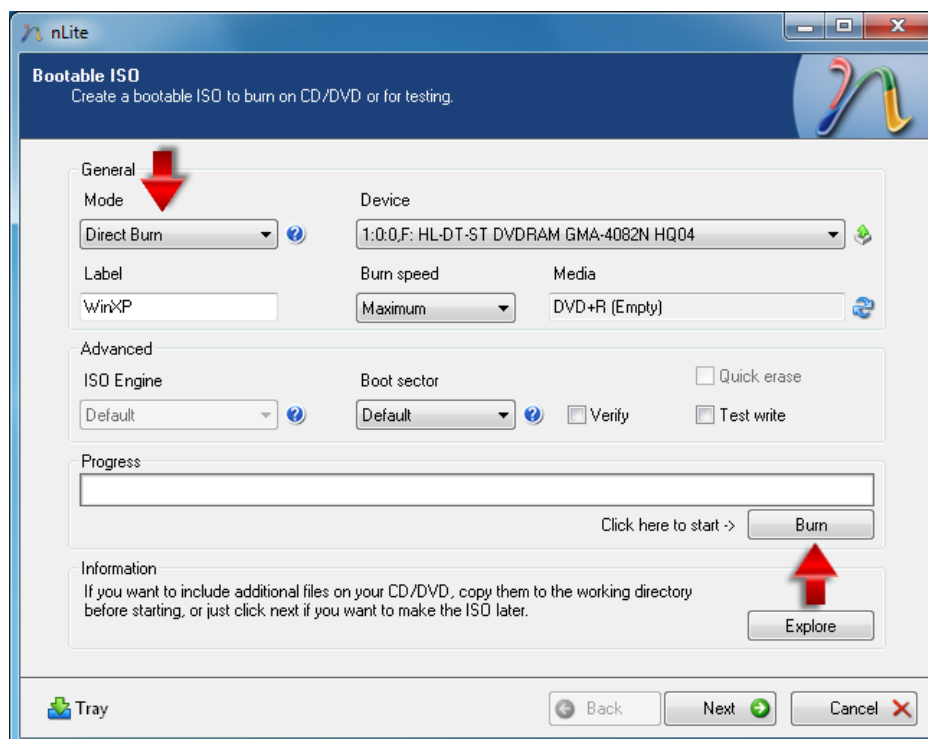


When you will want to burn this ISO file, run again nLite and in ‘ **Task Selection** ’ choose only ‘ **Bootable ISO** ’ and click ‘ **Next** ’. This time under ‘ **Mode** ’ select ‘ **Burn Image** ’ and choose ‘ **Burn** ’. Browse to the path where the ISO file is stored and double left-click it.

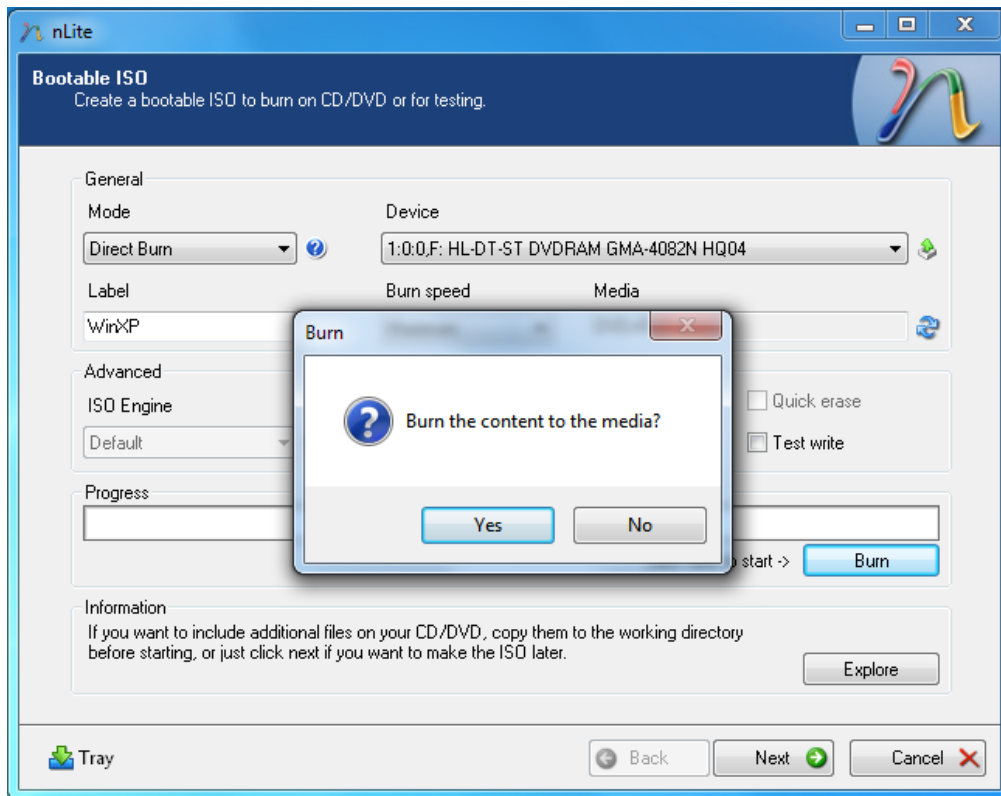


### Option 2. Directly burning new XP CD/DVD:

Before you will do anything you may want to change standard ‘ **Label** ’ name. Under ‘ **Mode** ’ choose ‘ **Direct Burn** ’ and click the ‘ **Burn** ’ button.



Choose ‘ **Yes** ’ to burn it to CD-R. Wait patiently until the process is complete.



**16.** Choose ‘ **Next** ’ and click ‘ **Finish** ’ to exit nLite.

