



## **Windows 10** **Reinstallation / clean installation**

- You can/should **directly download Windows 10** ISO from Microsoft site or **download Media creation tool** from Microsoft site, create installation DVD or installation USB drive and proceed with clean installation/reinstallation
- ➔ *Download* - <https://www.microsoft.com/en-us/software-download/windows10ISO>
- ➔ *Video reference* - <https://youtu.be/ng4r377njUU?t=48>

Make sure you select the proper version if asked (64 bit / Home or Pro)

Media Creation tool will always provide you with the latest Windows version/build (1909 / 2003...)

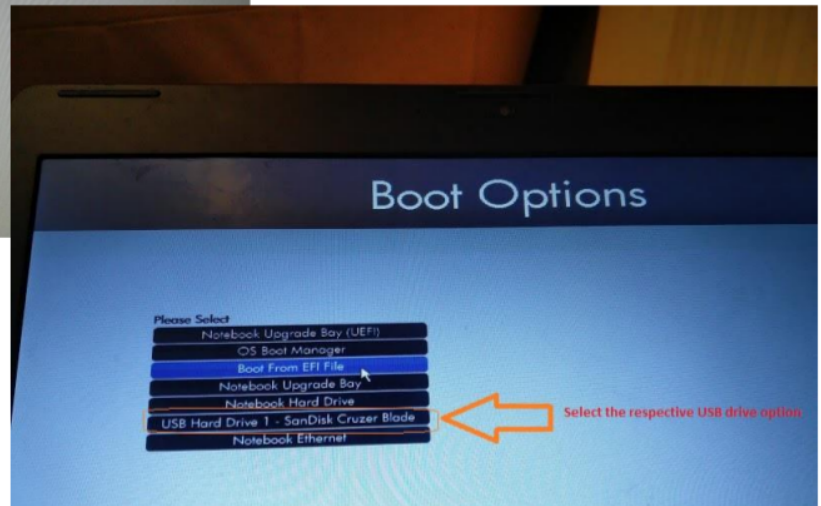
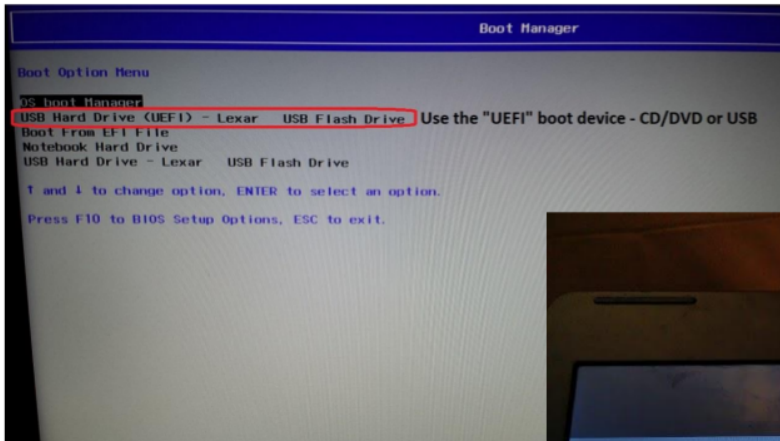
- When **download completes**, you will need to write the ISO image and boot from a bootable media.  
**Consider the USB pendrive option.** You will need a blank USB pendrive (min 8 GB capacity). Follow the media creation tool instructions
- **When ready with the USB drive:**
  - Please, shutdown the computer using the power button.
  - Insert the Windows USB thumb drive prepared previously
  - Press the button to POWER ON the PC.
  - As soon as you press the power-on button, immediately start hitting the **Esc** button repeatedly (like tap-tap-tap).
  - This should open the HP Startup Menu similar to this one

```
Startup Menu
F1    System Information
F2    System Diagnostics
F9    Boot Device Options
F10   BIOS Setup
F11   System Recovery

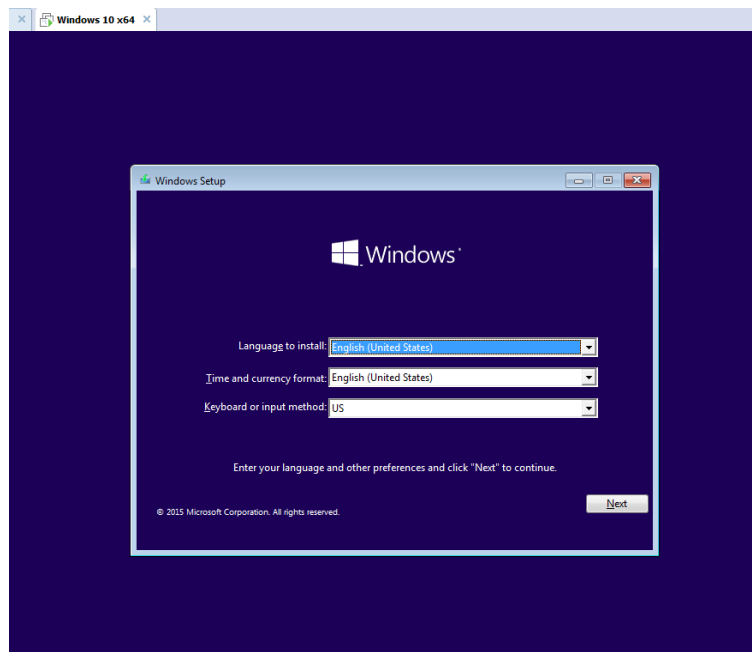
ENTER - Continue Startup

For more information, please visit: www.hp.com/go/techcenter/startup
```

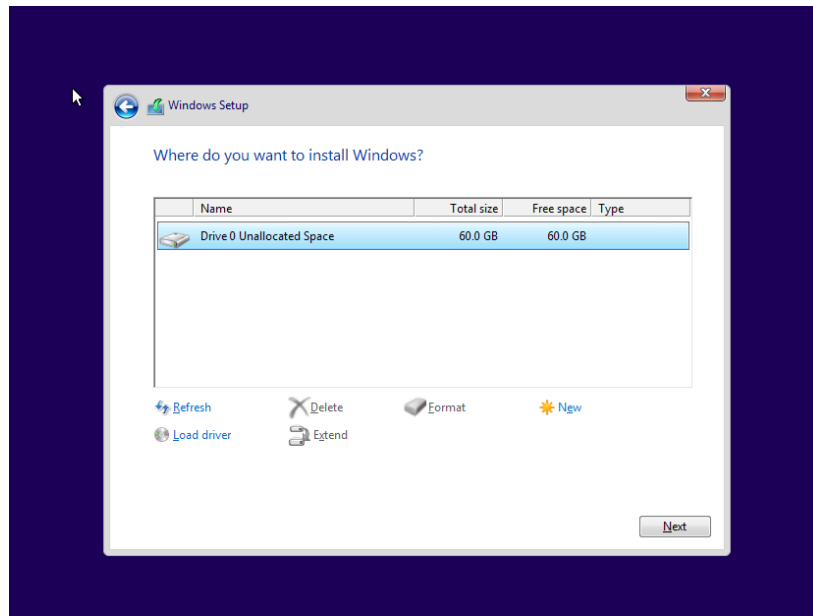
- Press/hit **F9** from your keyboard to open **Boot device options**.
- Select the USB thumb drive as a boot option and wait a while



- Follow the on-screen instructions to install Windows 10.



- Perform clean installation/custom installation (not repair) using the INSTALL NOW button.
- Delete all existing partitions and install Windows on *Disc 0 Unallocated space*



## **Windows 10** **After successful installation**

- Connect to a **Wi-Fi** or **cable/LAN** network only after you see your Desktop – not prior to it
- Click on Start → Settings → Update & Security

to **Update Windows** immediately - this will update Windows but it will also install drivers for this device to enable/active the hardware

Ensure you RESTART Windows several times to ensure all updates have been installed

- Make sure Windows is Activated by going to Start → Settings → Update & Security Windows Activation

- You may wish to stop some of the Windows Telemetry by using free tools such **DWS Lite 2.2.2.2-**